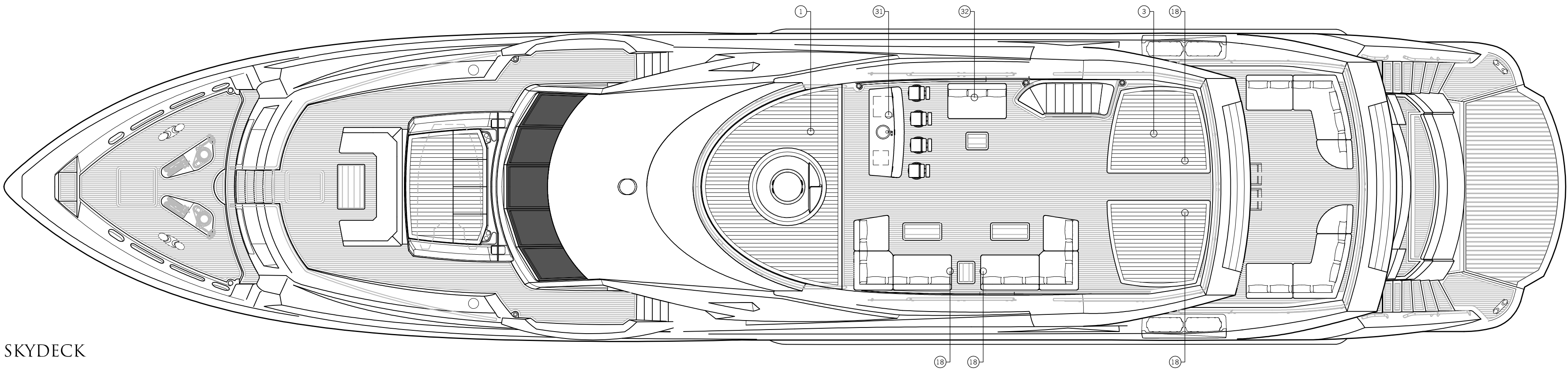
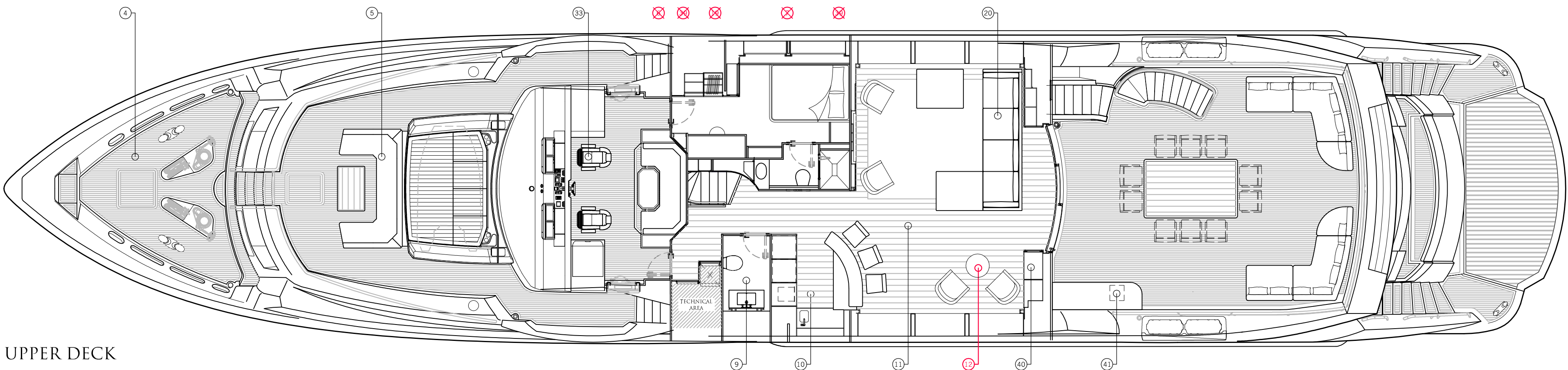


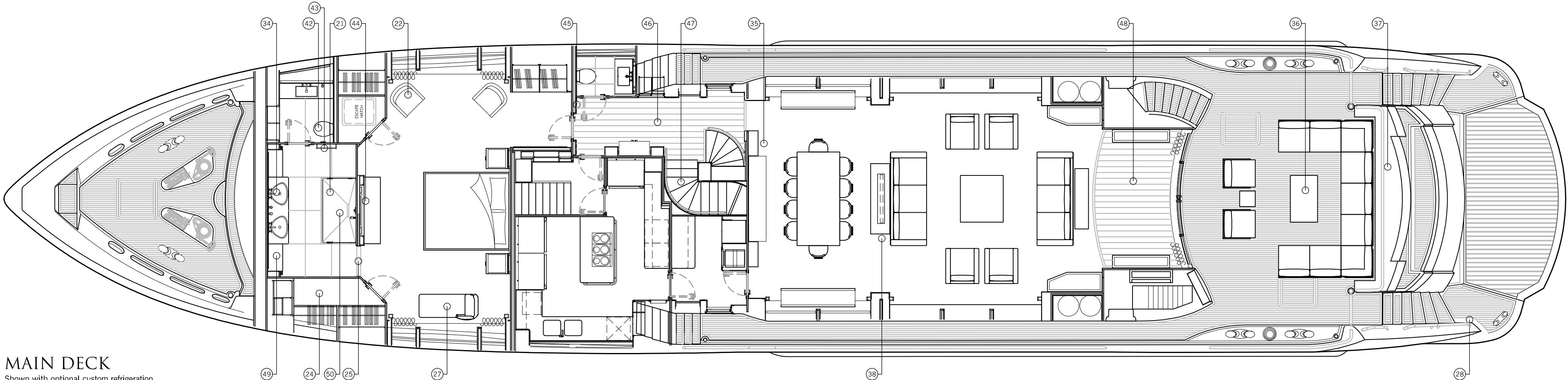
PROFILE
Shown with optional hardtop



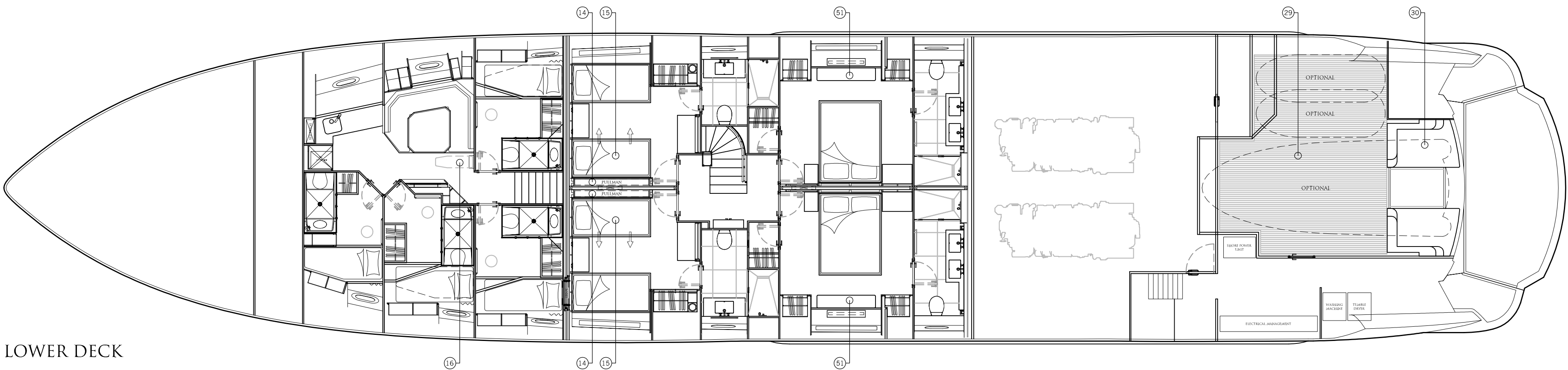
SKYDECK



UPPER DECK



MAIN DECK
Shown with optional custom refrigeration



LOWER DECK

NO.	DATE	CHANGES FROM STANDARD	NO.	DATE	CHANGES FROM STANDARD	NO.	DATE	CHANGES FROM STANDARD
1	07-04-16	Special - Full beam fwd sunpad with spa tub (handrail height increased to suit LY3 regulations - details tbc)	19	15-06-16	Special - Copboard reduced in size Cancelled	38	13-04-16	Option - Saloon TV columns removed
3	07-04-16	Special - Aft sunpad port & stbd (handrail height increased to suit LY3 regulations - details tbc)	20	10-05-16	Special - Custom seating arrangement with 2 x armchairs fwd	39	15-06-16	Special - Full height mirror on fwd & aft bulkheads Cancelled
4	07-04-16	Option - Forepeak teak decking	21	11-04-16	Option - Central shower arrangement	40	10-05-16	Special - Fire rated laptop safe in aft cabinetry (model tbc)
5	07-04-16	Option - Foredeck seating & table arrangement	24	11-04-16	Option - Extended walk in wardrobe	41	10-05-16	Option - Ice maker
6	15-06-16	Option - Stbd door removed Cancelled	25	11-04-16	Special - Single access en suite with sliding door	42	10-05-16	Option - Toilet with bidet function
7	15-06-16	Special - Upper deck gym with treadmill, exercise bike, rowing machine, & free weights. Inboard bulkhead with glass door & panels (under investigation) Cancelled	27	11-04-16	Special - Chaise in lieu of vanity desk	43	10-05-16	Option - Heated towel rail
9	07-04-16	Special - Dayhead in fwd position	28	11-04-16	Option - Platform shower	44	10-05-16	Special - Feature mirror in lieu of TV
10	13-04-16	Special - Open bar arrangement (with refrigerator, wine cooler, & ice maker)	29	11-04-16	Option - Synthetic teak flooring	45	10-05-16	Special - Feature mirror either side of cabin door
11	07-04-16	Option - Wooden flooring with inset carpet in seating area	30	11-04-16	Special - Garage lounge seating	46	10-05-16	Option - Wooden flooring in main deck lobby
12	19-06-16	Special - Base 2 x loose chairs with small table	31	13-04-16	Special - 116 Yacht wetbar with 4 x bar stools	47	10-05-16	Option - Wooden side capping not required on internal stairs
14	07-04-16	Option - Sliding inboard berth	32	13-04-16	Special - Stbd side seating group with coffee table	48	10-05-16	Special - Aft entrance wooden flooring (fwd curve to match ceiling feature)
15	07-04-16	Option - Pullman berth	33	18-04-16	Option - Additional helm seat - Seats fitted port & stbd	49	10-05-16	Special - Additional storage in lieu of vanity stools
16	07-04-16	Special - Bulkhead mounted ironing board	34	13-04-16	Special - Axor Massaud 600mm basins in lieu of standard (vanity unit height adjusted to suit)	50	10-05-16	Special - No body jets in shower
18	11-04-16	Special - Exterior power sockets required	35	13-04-16	Special - Fwd shelves not required, ceiling feature extended to suit	51	10-05-16	Special - Ottoman with storage in lieu of vanity unit
			36	13-04-16	Special - Fischer Mobil seating arrangement			
			37	13-04-16	Special - Stern moulding (as per 60516131)			

PROVISIONAL
FINAL DESIGN IS SUBJECT TO CHANGE

NO.	DATE	CHANGES FROM STANDARD	NO.	DATE	CHANGES FROM STANDARD	NO.	DATE	CHANGES FROM STANDARD
6	15-06-16	See spec notes: 6, 7, 12, 19, & 39	AA	EF				
DESIGN OFFICE	SUNSEEKER INTERNATIONAL LIMITED	TECHNOLOGY CENTRE	MAINTENANCE FLAT ROAD	POOLE BORST	ENGLAND	TEL: +44 (0)1202 301111	FAX: +44 (0)1202 302222	WWW.SUNSEEKER.COM
PROJECT NUMBER	S210	YACHT NAME	131 YACHT	BOAT NUMBER	60817131			
CUSTOMER	GENERAL ARRANGEMENT	S210-25-995-001						
1 OF 1								