

SUNSEEKER 116 YACHT

INTRODUCING

THE SUNSEEKER 116 YACHT



YACHT COMPARISON

	116 Yacht	131 Yacht	155 Yacht
Length Overall (metres)	35.2	40.05	47.25
Water Line Length (metres)	27.47	31.19	41.14
Maximum Beam (metres)	7.33	8.09	9.4
Draft @ Full Load (metres)	2.39	2.7	2.66
Fuel Capacity			
– Including Standard Overload Tanks (litres)	19,050	26,800	60,000
Fresh Water Capacity (litres)	4,000	4,950	13,765
Grey Water Capacity (litres)	1,255	1,350	2,975
Black Water Capacity (litres)	1,340	1,450	1,800
Gross Tonnage	236 (estimate)	338	495
Displacement Light Load (kg)	130,000 (estimate)	181,400	250,000
Displacement Half Load (kg)	135,000 (estimate)	189,600	275,000
Displacement Full Load (kg)	147,000 (estimate)	208,600	325,000
Engines	2 x MTU 16V 2000 Series M96L (2640 PS)	2 x MTU 4000 Series M93 (3180 PS)	2 x MTU 4000 Series M73L (2610 PS)
Generator (Suggested Specification)	2 x Kohler 70kW	2 x Kohler 80kW	2 x MTU/Northern Lights 155kW, Plus 1 x Emergency Generator 50kW
Max Speed	25 knots (estimated)	23 knots	20 knots
Cruising Speed	16 - 18 knots (estimated)	16 - 18 knots	15 knots
Range @ 10 knot	1500 nautical miles (estimated)	2000 nautical miles	4,000 nautical miles

YACHT COMPARISON

	116 Yacht	131 Yacht	155 Yacht
Yacht Style	Raised Pilot House	Tri Deck	Tri Deck + Beach Club Deck
Number of Guest Cabins – Standard Layout	5	5	5
Number of En-Suites – Standard Layout	5	5	5
Number of Day Heads – Standard Layout	1	2	3
Number of Saloons – Standard Layout	1	2	2
Number of Dining Areas – Standard Layout	1	1	1
Number of Galley's – Standard Layout	1	1	1
Servery Areas – Standard Layout	1	2	2
Crew Capacity – Standard Layout	5	8	11
External Deck Areas	3	4	5
Recommended Tender	Williams 565 Jet	Williams 565 Jet	Williams 625 Jet
Recommended Jet Skis	2 x Sea Doo RXP-X 260 RS	2 x Sea Doo RXP-X 260 RS	2 x Sea Doo RXP-X 260 RS

YACHT SUMMARY

The new 116 Yacht shares the proven engineering platform of the highly successful 115 Sport Yacht but features a stunning new deck and superstructure design.

Innovative design such as the amazing lower feature windows in the master stateroom and full height glass in the saloon with cut away deck bulwarks flood the yacht's living accommodation with natural daylight. Maximising window size provides an uncharacteristic feeling to this size of yacht.

Whilst the exterior areas of the 116 Yacht are much improved;

with a larger aft cockpit, longer flybridge and an exciting new entertainment 'Club' concept for the foredeck, the interior volume has been transformed through use of the latest 3D CAD design technology.

Based on the classic Sunseeker deep V hull, this is a yacht that still has performance at heart whether cruising at 16 –18 knots or sprinting at 25 knots.

Without doubt, this exciting new yacht is set to be a market leader and admired by both clients and competition.













SUNSEEKER 116 YACHT

THE SUNSEEKER 116 YACHT



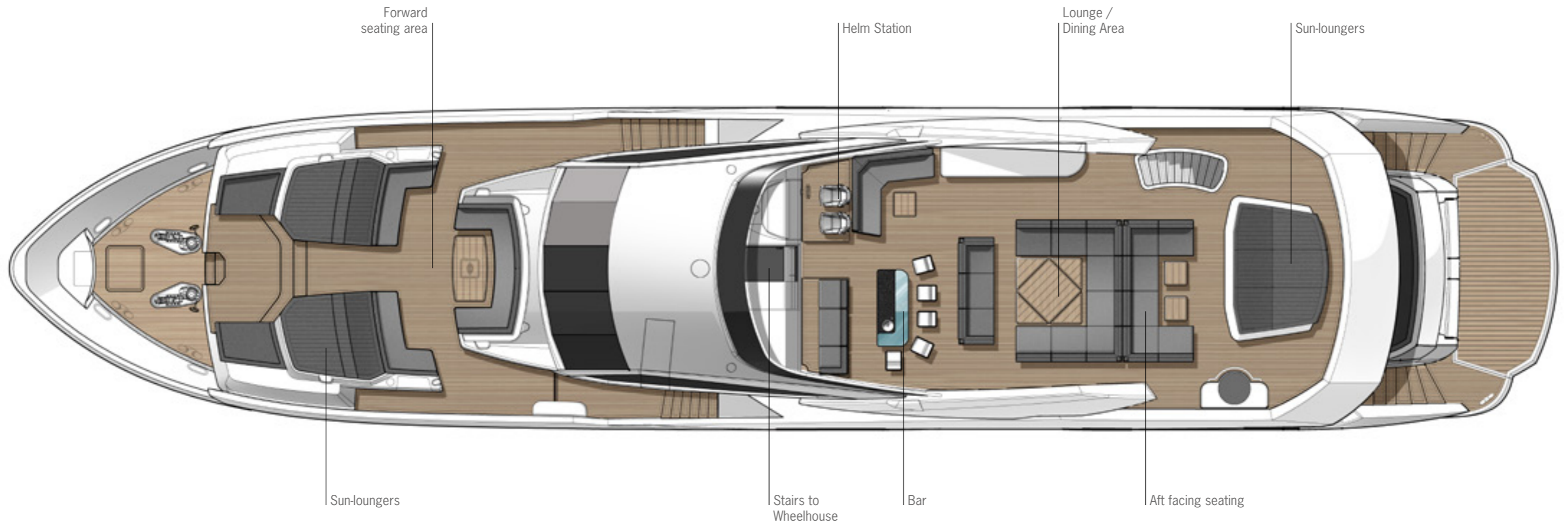
GENERAL ARRANGEMENTS



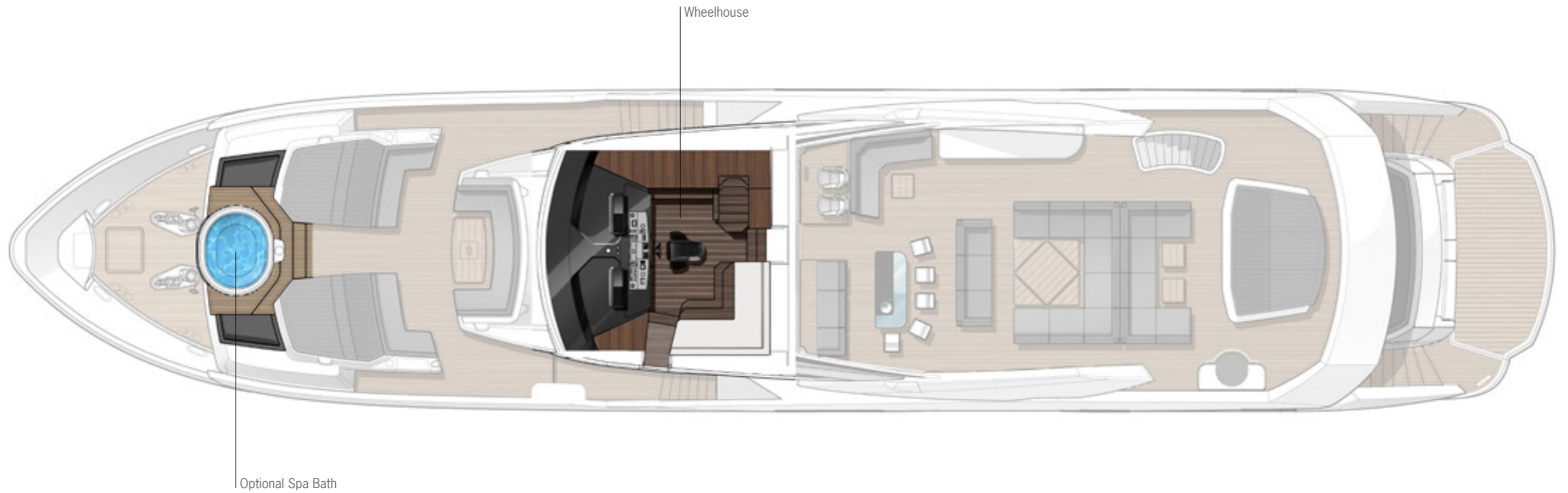
PROFILE



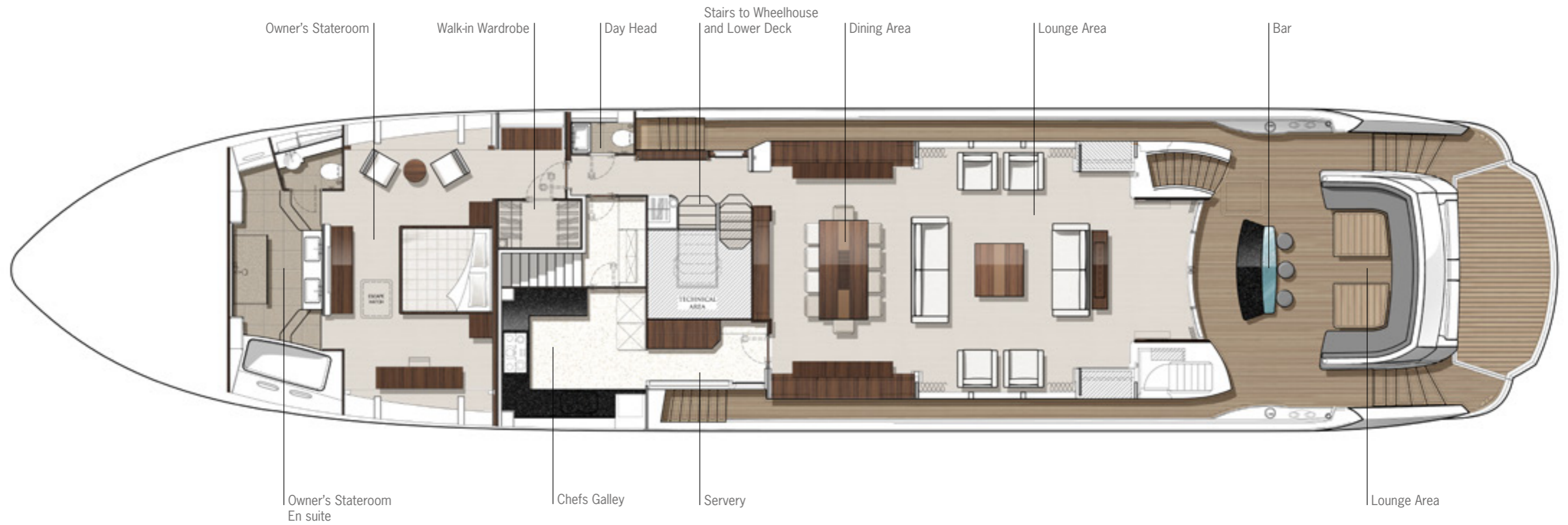
FLYBRIDGE AND DECK PLAN



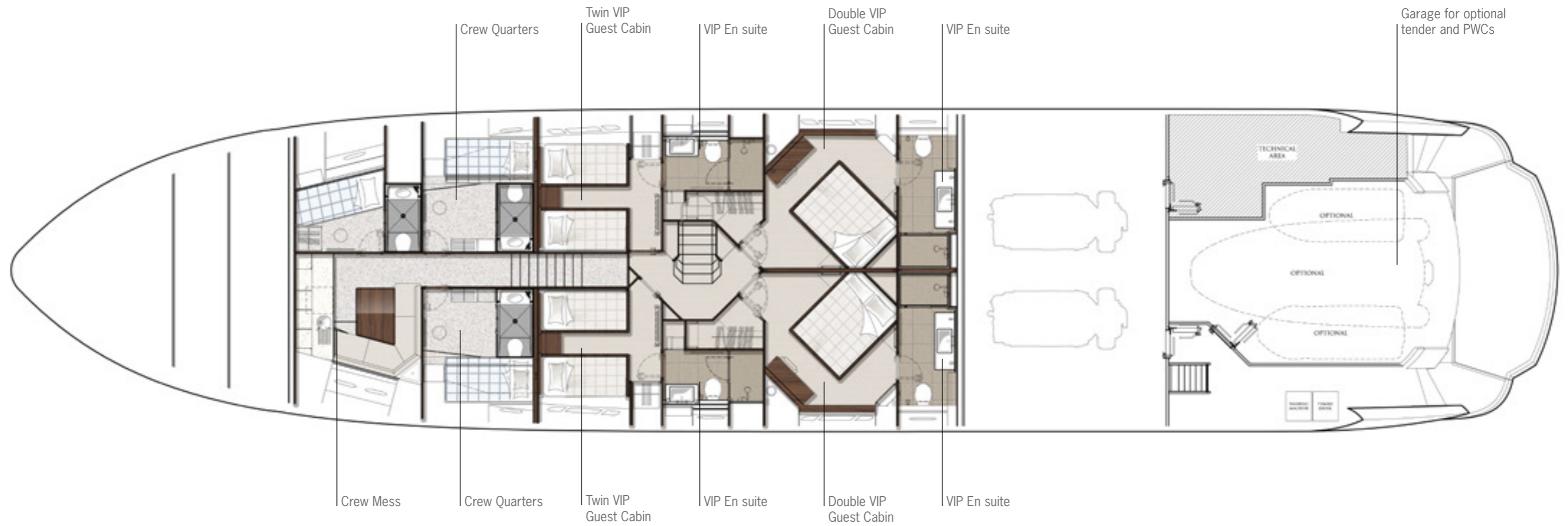
WHEELHOUSE PLAN AND SPA BATH OPTION



MAIN DECK PLAN



LOWER DECK PLAN





*Every attempt has been made to give accurate information, but performance and range figures are estimates given as a guide only. Dirt or growth on the hull, tuning of the engines, size, make of engines fitted, damage to propellers, the temperature of the air and water, the weight of fuel, water, stores, number of people, propeller pitch, quality of fuel and other matters, can all affect a boat's performance and range. For these and other reasons we can give no performance, range or other guarantees, and neither such guarantees nor anything contained herein constitutes an offer of contract or any representation or agreement, or may otherwise be relied upon. The photographs and artist's impressions in this brochure are of existing models in the Sunseeker range. There may be items shown in these photographs and artist's impressions that are not included in the standard inventory of the models shown. Specifications contained on the website are samples only and should not be relied upon and may refer to models only intended for sale in a particular territory and not generally. No guarantee is given that any model will be available in any territory; however, by contacting us we can advise you of models that are likely to be available in each territory. Actual specifications will be provided when a sales order or enquiry is placed with us or our approved Sunseeker dealer. Specifications for models sold in different markets may vary and specifications and models may be changed or withdrawn at any time without prior notice. The individual specification for each vessel will be agreed as part of the sale contract between the purchaser and the Sunseeker dealer. Dealers and distributors are independently owned and operated entities, and therefore Sunseeker dealers and distributors are not owned by Sunseeker International Limited or any subsidiaries or other related entity of this company nor are they their agents. Therefore they have absolutely no authority to commit Sunseeker International Limited, or any subsidiary or other related entities of Sunseeker International Limited to any pledge, contract or agreement in any form or by any means unless first accepted in writing by Sunseeker International Limited. In some examples herein Sunseeker have referred to measurements, specifications or other details applicable to a particular territory and no guarantee is given that these are applicable to your territory. For ease of reference we have, in some cases, referred to "we" or "Sunseeker" and these terms should be taken to mean Sunseeker International Limited. ©Sunseeker International Limited.